

vtech®

Instruction Manual



Construction Site



VTech understands that a child's needs and abilities change as they grow and with that in mind we develop our toys to teach and entertain at just the right level...

vtech Baby

Toys that will stimulate their interest in different textures, sounds and colours

I am...

...responding to colours, sounds and textures

...understanding cause and effect

...learning to touch, reach, grasp, sit-up, crawl and toddle

Birth-36 months



Pre-School

Interactive toys to develop their imagination and encourage language development

I want...

...to get ready for school by starting to learn the alphabet and counting

...my learning to be as fun, easy and exciting as can be

...to show my creativity with drawing and music so my whole brain develops

3-6 years



Electronic Learning Computers

Cool, aspirational and inspiring computers for curriculum related learning

I need...

...challenging activities that can keep pace with my growing mind

...intelligent technology that adapts to my level of learning

...National Curriculum based content to support what I'm learning at school

4-10 years

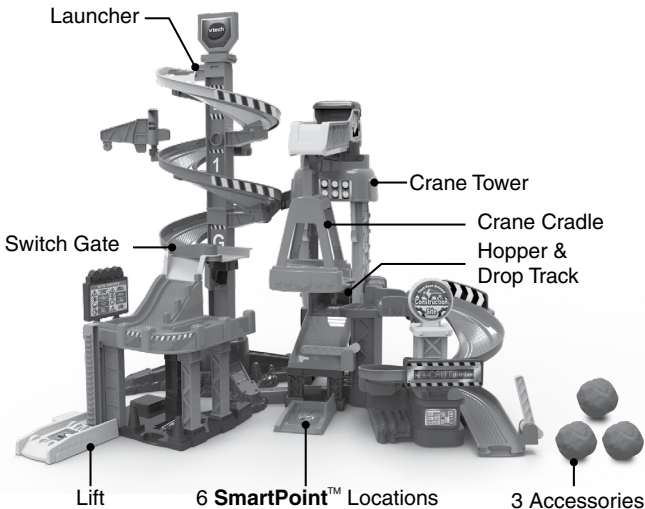


To learn more about this and other VTech® products, visit www.vtech.co.uk

INTRODUCTION

Thank you for purchasing the **VTech® Toot-Toot Drivers® Construction Site**.

Drive and work around this exciting Toot-Toot Drivers® Construction Site by VTech®! Launch the included Toot-Toot dumper truck from the very top and watch as it scoots down the corkscrew track onto the cradle and down the second track!



SmartPoint™ Dumper Truck

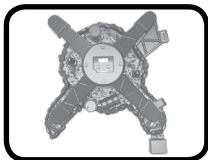
INCLUDED IN THIS PACKAGE



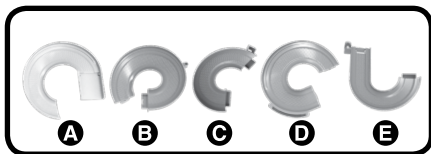
One **SmartPoint™**
dumper truck



Three accessory
pieces



One spiral track base



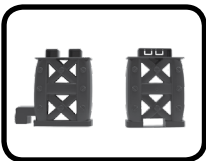
Five tracks (A,B,C,D,E)



One sign



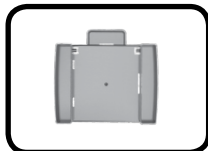
Two spiral track
supports



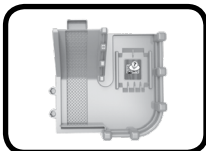
Two tower
supports



One **SmartPoint™**
launcher



One skip bracket



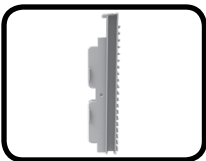
One **SmartPoint™**
platform



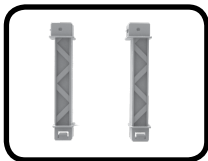
One **SmartPoint™**
lift



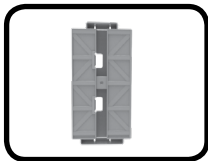
One lift support



One lift cover



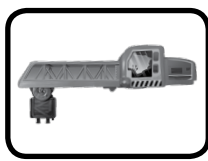
Two small lift supports



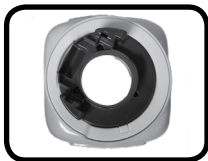
One lift wall



One **SmartPoint**[™] parking base



One crane



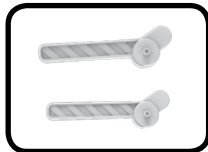
One crane base



One hanging basket



One hanging basket base



Two exit gates



One conveyor support



One **SmartPoint**[™] loading location



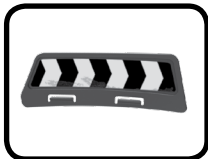
One hopper



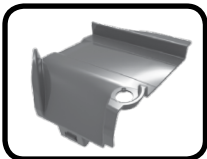
One conveyor belt



One rectangle plate



One arc-shaped plate



One crossing
track



One track switcher



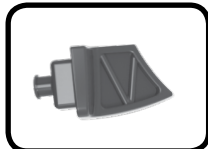
One tower bracket



Two high
supports



One tower base



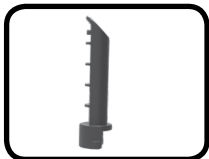
One small link
bracket



One billboard



One guideboard



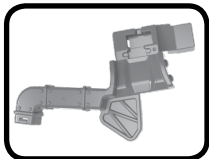
One guideboard shaft



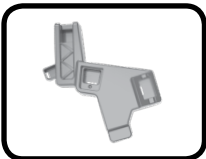
One crane cover



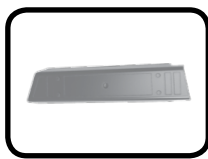
One short link bracket



One low tower link bracket



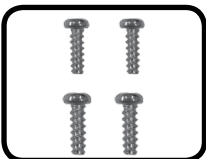
One high tower link bracket



One long link bracket



Crossing track bracket



4 screws

- Label Sheet
- Quick Start Guide

WARNING:

All packing materials such as tape, plastic sheets, packaging locks, removable tags, cable ties, cords and packaging screws are not part of this toy and should be discarded for your child's safety.

NOTE:

Please save this Instruction Manual as it contains important information.



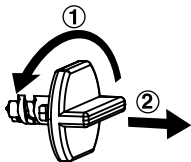
CAUTION:

Adult assembly required. This package contains small parts. For your child's safety, do not let your child play with the toy until it is fully assembled.

If there are no locks inside the package, disregard this message.

Removing the Packaging Locks:

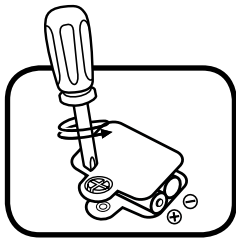
- ① Turn the packaging locks anticlockwise several times.
- ② Pull out the packaging locks and discard.



INSTRUCTIONS

Battery Removal And Installation Dumper Truck

1. Make sure the unit is turned **OFF**.
2. Locate the battery cover on the bottom of the Dumper Truck. Use a screwdriver to loosen the screw and then open the battery cover.
3. If used batteries are present, remove from the unit by pulling up on one end of each battery.



4. Install 2 new AAA (AM-4/LR03) batteries following the diagram inside the battery box. (For best performance, alkaline batteries or fully charged Ni-MH rechargeable batteries are recommended).
5. Replace the battery cover and tighten the screw to secure.

WARNING:

Adult assembly required for battery installation.

Keep batteries out of reach of children.

IMPORTANT: BATTERY INFORMATION

- Insert batteries with the correct polarity (+ and -).
- Do not mix old and new batteries.
- Do not mix alkaline, standard (carbon-zinc) or rechargeable batteries.
- Only batteries of the same or equivalent type as recommended are to be used.
- Do not short-circuit the supply terminals.
- Remove batteries during long periods of non-use.
- Remove exhausted batteries from the toy.
- Dispose of batteries safely. Do not dispose of batteries in fire.

RECHARGEABLE BATTERIES:

- Remove rechargeable batteries from the toy before charging.
- Rechargeable batteries are only to be charged under adult supervision.
- Do not charge non-rechargeable batteries.

Disposal of batteries and product



The crossed-out wheellie bin symbols on products and batteries, or on their respective packaging, indicates they must not be disposed of in domestic waste as they contain substances that can be damaging to the environment and human health.

The chemical symbols Hg, Cd or Pb, where marked, indicate that the battery contains more than the specified value of mercury (Hg), cadmium (Cd) or lead (Pb) set out in the Batteries and Accumulators Regulation.



The solid bar indicates that the product was placed on the market after 13th August, 2005.

Please dispose of your product and batteries responsibly.

In the UK, give this toy a second life by disposing of it at a small electricals collection point* so all of its materials can be recycled.

Learn more at:

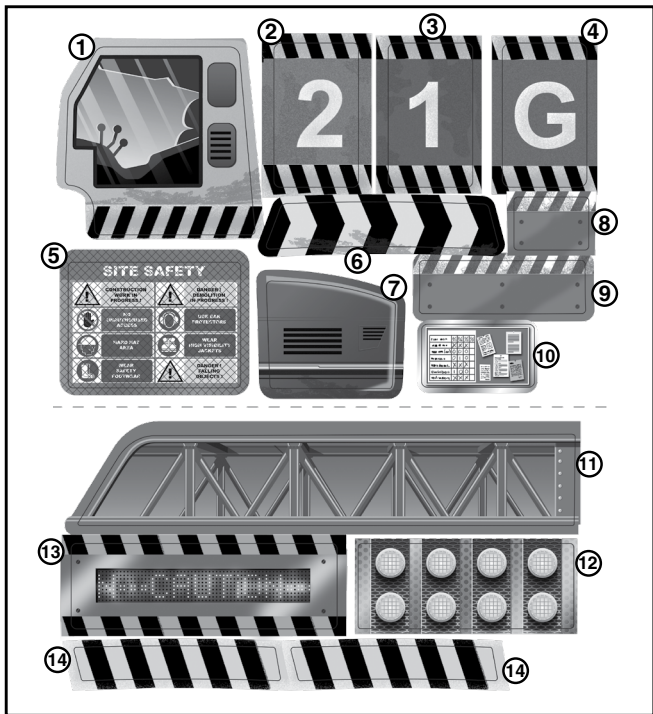
www.vtech.co.uk/recycle

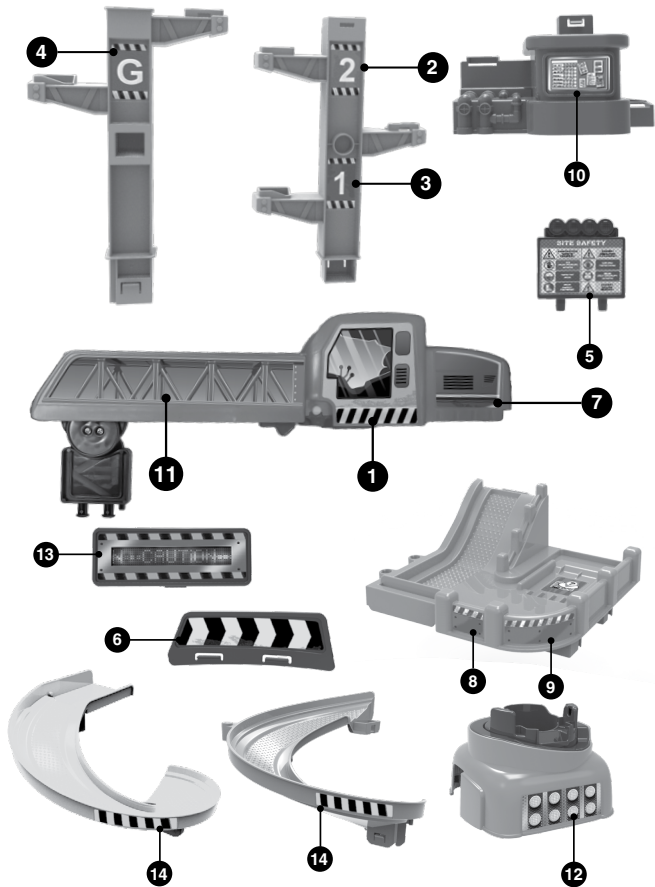
www.vtech.com.au/sustainability

* Visit www.recyclenow.com to see a list of collection points near you.

LABEL APPLICATION

Please stick the labels to the play set securely as indicated on the following page:



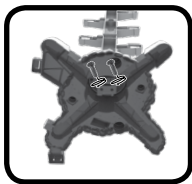


ASSEMBLY INSTRUCTIONS

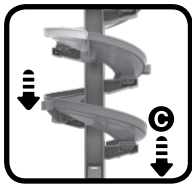
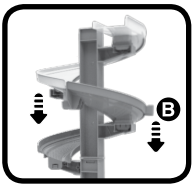
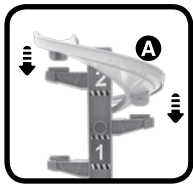
With the **VTech® Toot-Toot Drivers® Construction Site**, safety comes first. To ensure your child's safety, adult assembly is required.

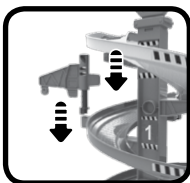
1. Assemble and attach the 3-loop spiral track components following the steps as below:

A: Insert one Spiral Support into the Spiral Track Base, attach the other Spiral Support. Make sure you hear a clicking sound to confirm they are firmly connected. Tighten it with two screws to secure.



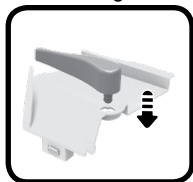
B: Insert Track A into the Spiral Support, attach Track B to Track A, attach Track C to Track B. Attach the Sign into the Tower Top, insert the **SmartPoint™** launcher to Track A. Insert the Guideboard Shaft to Track B first, then attach the Guideboard into the Guideboard Shaft.





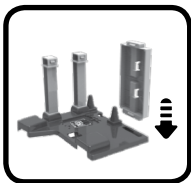
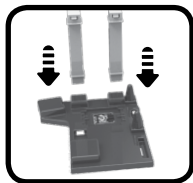
2. Assemble and attach the components for the Crossing Track following the steps as below:

Insert the Track Switcher to the Crossing Track Bracket. Connect the Crossing Track Bracket to the Tower bracket and Track C.

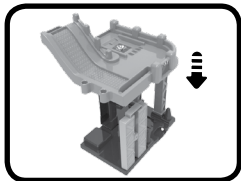


3. Assemble and attach the lift components following the steps below:

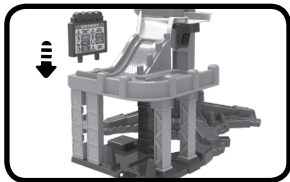
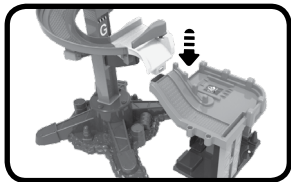
A: Insert the two Small Lift Supports, the Lift Wall and the Lift Support into the **SmartPoint™** Parking Base.



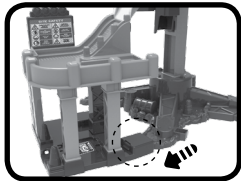
B: Attach the **SmartPoint™** Platform to the three Lift Supports and the Lift Wall.



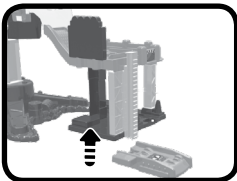
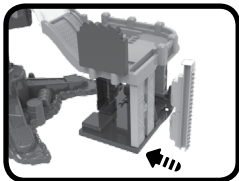
C: Attach the **SmartPoint™** Platform to the Crossing Track. Insert the Billboard into the **SmartPoint™** Platform.



D: Insert the **SmartPoint™** Parking Base into the Tower bracket.

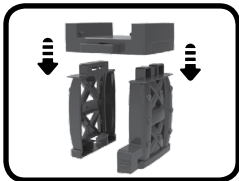


E: Insert the Lift Cover to the Lift Wall, connect the **SmartPoint™** Lift to the Lift Cover.

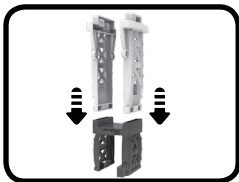


4. Assemble and attach the crane and tower components following the steps as below:

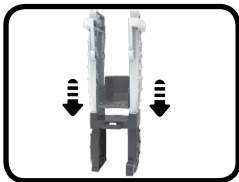
A: Insert the Skip Bracket into the Two Tower Supports.



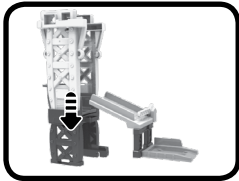
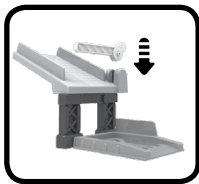
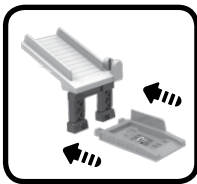
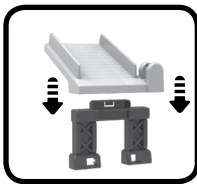
B: Insert the two High Supports into the Skip Bracket.



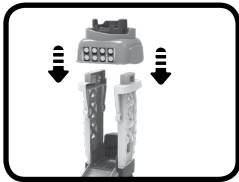
C: Attach the Hopper to the Skip Bracket.



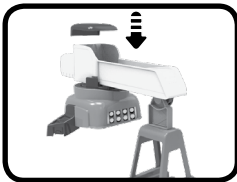
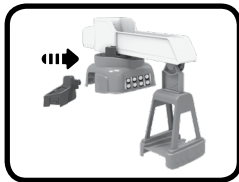
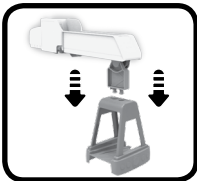
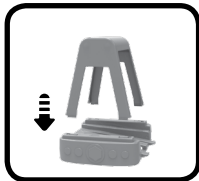
D: Insert the Conveyor Support into the Conveyor Belt, insert the **SmartPoint™** Loading Location into the Conveyor Support, insert an Exit Gate into the Conveyor Belt. Attach the Conveyor Belt to the Hopper.



E: Insert the Crane Base into the two High Supports.

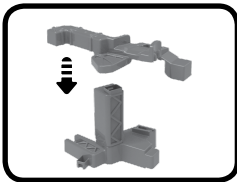
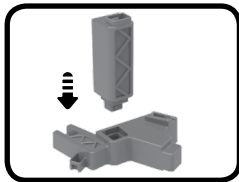


F: Insert the Crane Cradle into the Crane Cradle Base. Insert the Crane Cradle into the Crane. Attach the Crane to the Crane Base. Insert the Small Link Bracket into the Crane Base. Attach the Crane Cover to the Crane.

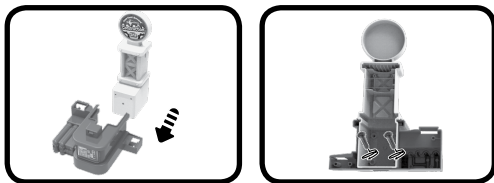


5. Assemble and attach the construction tower components following the steps as below:

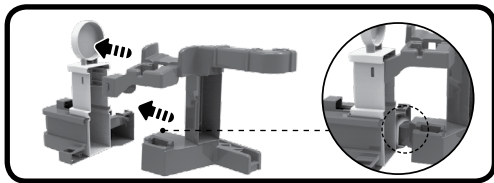
A: Insert the Short Link Bracket into the High Tower Link Bracket. Insert the Low Tower Link Bracket into the Short Link Bracket.



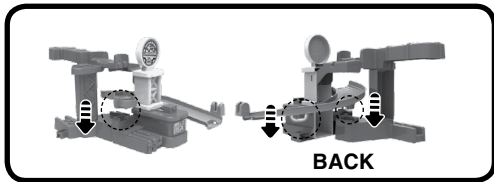
B: Insert the Tower Bracket into the Tower Base. Make sure you hear the clicking sound to confirm they are firmly connected. Tighten it with two screws to secure.



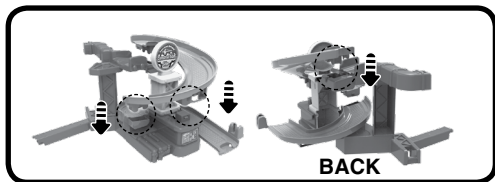
C: Connect the Tower Bracket to the Low Tower Link Bracket. Connect the Tower Base to the High Tower Link Bracket.



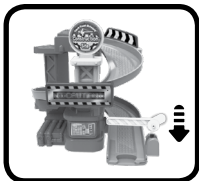
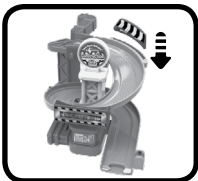
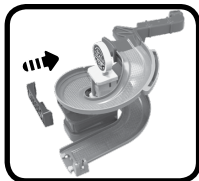
D: Double check the connections between Track E, the Tower Base and the High Tower Link Bracket as in the picture below. Make sure you hear a clicking sound to confirm they are firmly connected.



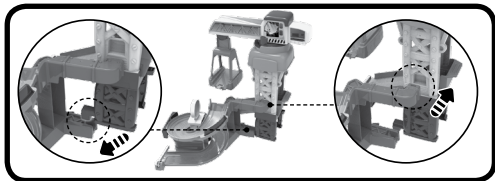
E: Attach Track E to Track D. Insert Track D into the Low Tower Link bracket.



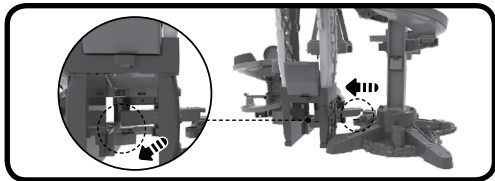
F: Insert the Rectangle Plate and the Arc-Shaped Plate into Track D. Insert the other Exit Gate into Track E.



G: Insert the High Tower Link Bracket into the Tower Support. Insert the Low Tower Link Bracket into the High Support.



H: Connect the Spiral Track Base and the High Tower Link Bracket to the Long Link Bracket.





Once you've completed the above steps, you are ready to play! You can connect the **Toot-Toot Drivers® Construction Site** to other **Toot-Toot Drivers®** play sets and tracks (each sold separately).

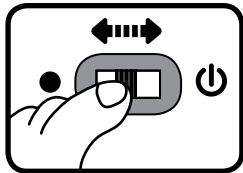


PRODUCT FEATURES

Dumper Truck

1. On/Off Switch

To turn the unit **On**, slide the **On/Off Switch** to the **On** () position. To turn the unit **Off**, slide the **On/Off Switch** to the **Off** () position.



2. Automatic Shut-Off

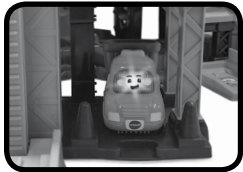
To preserve battery life, the **Dumper Truck** will automatically power-down after approximately 60 seconds without input . The unit can be turned on again by pressing the Light Up Button, rolling the Dump Trucker quickly or triggering a **SmartPoint™** location.

Note: This product is in try-me mode in the packaging. After opening the package, turn the **Dumper Truck** off and on again to proceed with normal play. If the unit powers down while playing, we suggest changing the batteries.

ACTIVITIES

Dumper Truck

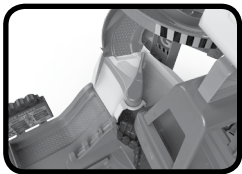
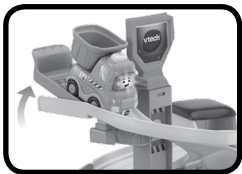
1. Press the **Light Up Button** to hear fun phrases, songs, sounds and melodies. While a melody is playing, continue pushing the **Dumper Truck** to add fun sounds on top of the melody. The light up face button will flash with the sounds.
2. Push the **Dumper Truck** to hear fun sounds and phrases. The light up face button will flash with the sounds.
3. Raise and lower the **Truck Bed** to hear fun sounds and phrases. The light up face button will flash with the sounds.
4. Place the **Dumper Truck** on one of the play set's six **SmartPoint™** locations to see the **Dumper Truck's** lights flash and to hear fun sounds, short tunes and phrases. The **Dumper Truck** even interacts with other **Toot-Toot Drivers®** play sets (other play sets sold separately).



ACTIVITIES

Construction Tower

1. Place the **Dumper Truck** or any other suitable **SmartPoint™** vehicle (each sold separately) on any of the six **SmartPoint™** locations to trigger fun sounds, songs or phrases.
2. Put the accessories in the **Truck Bed** to load and transport.
3. Put the **Dumper Truck** on the **SmartPoint™ Launcher**, then lift the launcher to send the **Dumper Truck** down the spiral ramps.
4. Rotate the **Track Switcher** to let the **Dumper Truck** pass through and go onto the **SmartPoint™ Platform**.



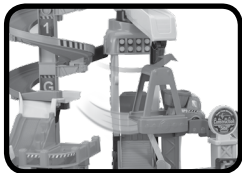
5. Put the **Dumper Truck** on the **SmartPoint™ Lift** and then move the lift up and down.



6. Put the **Dumper Truck** on the **SmartPoint™ Parking Area** to have a rest.



7. Put the **Dumper Truck** on the spiral tracks to see it race down, it can be transferred to the other side of the track using the crane for added interactivity.



8. Flip the **Hopper** and lift up the **Exit Gate** to dump the accessories in the truck bed.



MELODY LIST

1. Bingo
2. Sailing, Sailing
3. London Bridge
4. The Green Grass Grew All Around
5. Humpty Dumpty
6. Jack Sprat

SONG LIST

Song 1

Rolling down the road, to the building site,
Loading and unloading, all day and night.

Song 2

My truck fills up, up, and up,
Then I go and dump it all out!

Song 3

Toot! Toot! Drivers.
Toot! Toot! Drivers.
I'm a Toot! Toot! Drivers dumper Truck,
Lift up the back of my truck. (Toot! Toot!)
Unload everything, one, two, three.
Let's Toot! Toot! and see. (Toot Toot!)

CARE & MAINTENANCE

1. Keep the unit clean by wiping it with a slightly damp cloth.
2. Keep the unit out of direct sunlight and away from any direct heat sources.
3. Remove the batteries if the unit will not be in use for an extended period of time.
4. Do not drop the unit on hard surfaces and do not expose the unit to moisture or water.

TROUBLESHOOTING

If for some reason the program/activity stops working or malfunctions, please follow these steps:

1. Please turn the unit **Off**.
2. Interrupt the power supply by removing the batteries.
3. Let the unit stand for a few minutes, then replace the batteries.
4. Turn the unit **On**. The unit should now be ready to play with again.
5. If the product still does not work, install a brand new set of batteries.

CONSUMER SERVICES

Creating and developing **VTech**[®] products is accompanied by a responsibility that we at **VTech**[®] take very seriously. We make every effort to ensure the accuracy of the information, which forms the value of our products. However, errors sometimes can occur. It is important for you to know that we stand behind our products and encourage you to call our Consumer Services Department with any problems and/or suggestions that you might have. A service representative will be happy to help you.

UK Customers:

Phone: 0330 678 0149 (from UK) or +44 330 678 0149 (outside UK)

Website: www.vtech.co.uk/support

Australian Customers:

Phone: 1800 862 155

Website: support.vtech.com.au

NZ Customers:

Phone: 0800 400 785

Website: support.vtech.com.au

PRODUCT WARRANTY/ CONSUMER GUARANTEES

UK Customers:

Read our complete warranty policy online at vtech.co.uk/warranty.

Australian Customers:

VTECH ELECTRONICS (AUSTRALIA) PTY LIMITED –
CONSUMER GUARANTEES

Under the Australian Consumer Law, a number of consumer guarantees apply to goods and services supplied by VTech Electronics (Australia) Pty Limited. Please refer to vtech.com.au/consumerguarantees for further information.

**Visit our website for more
information about our products,
downloads, resources and more.**

www.vtech.co.uk
www.vtech.com.au

